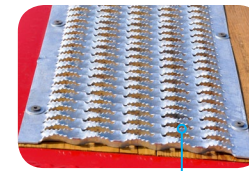


# 45HDT | Extreme Duty Hydraulic Dampened Tilt

Shown with Optional Special Color, Spare Mount, 12k Drop-Leg Jack & Traction Tread

**GVWR: 14,000 lbs**  
**BED LENGTHS: 18'-22'**  
**BED WIDTH: 82"**



**SEALED WIRING HARNESS**  
with molded 7-way plug

**SPARE MOUNT OPTION**  
Optional Spare Mount  
(Spare Wheel & Tire Sold Separately)

**ADJUSTABLE COUPLER**  
5 Position, 2-5/16" 15,000 lb Capacity,  
Adjustable Cast Coupler  
(Optional Gooseneck Package Available)

**12" FORMED FRONT BUMPER**  
3/16" Gusseted

**CHAIN TRAY**



**FENDERS**  
14 ga Diamond Plate,  
Tear Drop Fenders  
(added strength & durability)


**TRACTION TREAD OPTION**  
Optional 14" Galvanized Traction Tread  
adds traction for loading equipment in  
inclement weather conditions

**HYDRAULIC DAMPENED TILT**  
When released, the tilt bed rises to the  
loading position. Then when loaded,  
it descends slowly and safely with the  
weight of the load

**JACK**  
12,000 lb Capacity,  
Heavy Duty, Square,  
Spring-loaded,  
Drop-Leg Jack

**4' STATIONARY DECK**  
with 2" Treated Lumber

**FLOOR**  
2" Treated Lumber, installed AFTER  
painting to ensure no framing is left  
unfinished. Floor is secured with 5/16"  
screws and a bolt-on board cap.

  
**DEXTER AXLE**  
2 - 7000 lb E-Z Lube for  
easy lubrication  
with Electric Brakes

**TIRES**  
ST235/80R16 10-Ply Radial  
16" X 8 Hole Wheels

**STAKE POCKETS**  
6 Stake Pockets used as  
tie down points

**BED LATCH**  
Secures the bed in the  
travel position.

**FULL-WRAP TONGUE**  
6" channel tongue extends beyond the front  
of the trailer bed back to the fenders adding  
strength & durability to the trailer

**TIE DOWNS**  
4 D-Rings used to secure  
equipment for transport

**ADJUSTABLE BALL VALVE**  
Allows the bed to be locked in the tilted  
position, as well as, easily controlling the  
rate of descent after equipment is loaded

**FRAME & CROSS MEMBERS**  
Extra Heavy Duty 7" Channel Iron Frame, 3"  
Channel Iron Cross-Members on 16" Centers,  
and Gusseted 3/16" Formed Front Bumper

**ALL RUBBER-MOUNTED LED LIGHTS**



Diamond C uses road-tested DuPont polyurethanes that provide the trailers with a long-lasting, rugged, and beautiful finish.

Specifications, standard features, options, components, and colors are subject to change without notice. Some features may be subject availability, delays, or discontinuance.

**Standard Premium Dupont Paint Colors**  
Custom colors available upon request.

